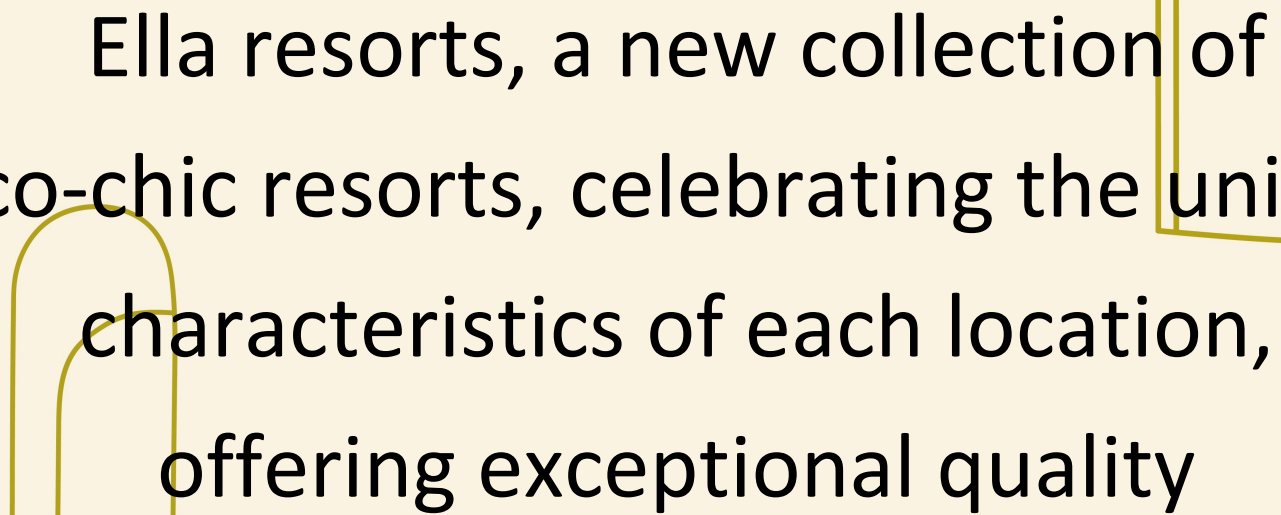




ELLA
RESORTS

Ella resorts, a new collection of
eco-chic resorts, celebrating the unique
characteristics of each location,
offering exceptional quality

A yellow outline of a building facade is positioned behind the text. It features a central arched window on the left side and a taller, narrower arched window on the right side, both with simple rectangular bases.

ELLA. STAY. LIVE.

Ella Resorts are grounded in their locations, in hidden corners of the Mediterranean.






Ella Rhodes

A ZESTFUL
DESTINATION



An aerial view of a resort complex. In the center is a large, irregularly shaped swimming pool with a sandy beach area around it. The pool is surrounded by numerous lounge chairs, white umbrellas, and several wooden pergolas. To the left, there is a sandy beach that meets the ocean. The resort is lush with palm trees and other tropical vegetation. Modern, multi-story buildings with balconies are visible in the background and foreground. The overall atmosphere is one of a high-end, tropical vacation spot.

Vivid and Lavish



Sprawled over a 45,000 sqm estate, this unique laid-back venue blends with the natural landscape and sparkles with the warmth of Mediterranean ambience and tradition.

Wake up with a lovely view over famous Kalithea Beach , unwind to a gentle breeze, and soak up the sunshine from your tranquil veranda.

This Family Beach Resort that now swirls into the realm of super design chic unveils its new restaurants and bars inspired by contemporary culinary concepts. Experience brand new dining options next to the sandy beach and crystal clear waters.





The idyllic Aegean sea, luxury-style accommodation, a fusion of culinary options, refreshing swimming spots and a warm staff.

A Mediterranean retreat for families.



THE ACCOMMODATION

The image shows a contemporary living and sleeping area. On the left, a light-colored sofa with a subtle herringbone pattern is adorned with several pillows, including one with a striped pattern and another in a neutral tone. A light-colored blanket is draped over the sofa. In front of the sofa is a round, rustic wooden coffee table holding a small white vase and a pinkish-red vase with a green plant. The background wall is a textured, light grey color, featuring a large, intricate, recessed wall sculpture with organic, flowing lines. To the right, a glass partition with vertical wooden slats separates the living area from a bedroom. Through the glass, a bed with a grey duvet and striped pillows is visible. The overall aesthetic is clean, modern, and natural.

ACCOMMODATION

Helea Family Beach Resort offers its widest choice of rooms ever, from doubles to junior suites and one- and two-bedroom suites. The contemporary Rhodian styling is re-designed for total comfort and is complemented by chic furniture and floor to ceiling windows providing spectacular views across the sea and the beautifully landscaped gardens & turquoise pools.

A spacious, relaxing environment with each room offering an exclusive terrace, balcony or private garden. Light and airy, the accommodation has everything you could want to make your stay a real pleasure.

ROOM TYPES

No. of Rooms

Standard Double	356
Family Junior Suites	111
Premium Suites	19
Helea Suites	17





The image shows a contemporary dining and lounge area. The space is characterized by a warm, natural aesthetic with extensive use of light-colored wood. The ceiling features horizontal wooden beams and recessed lighting. Large, dome-shaped pendant lights in a dark brown or copper finish hang from the ceiling. The seating consists of rectangular wooden tables paired with white, slatted chairs. In the background, there is a lounge area with a long, low wooden counter and a wall of vertical wooden slats. Large green plants are placed throughout the space, adding a touch of nature. The overall atmosphere is clean, bright, and inviting.

THE DINING & LOUNGE AREAS

EAT & DRINK



The unique location
blends with a culinary
experience
and a flavoursome voyage
starts at Helea Family
Beach Resort.

Our restaurants and
lounges invite our guests
into a world full of fine
tastes. Various dining
options, including Greek
and Mediterranean cuisine,
waterfront cocktails and
snacks are a consistent
reminder of premium
hospitality, day and night.



MEDITERRANEAN CUISINE

Our main restaurant serves breakfast,
lunch & dinner in full buffet style

GREEK RESTAURANT BY THE POOL

Enjoy traditional Greek dishes during
the lunch or dinner time

ITALIAN RESTAURANT BY THE POOL

Available during dinner time, this
trattoria-style eatery is where you'll enjoy
some truly classic Italian specialties

LATIN AMERICAN CUISINE BY THE BEACH

A refined dining experience inspired
by the Latin American Cuisine

SNACK BAR BY THE BEACH

Tasteful bites and refreshing sips by the sea

STREET FOOD HUB

Some of our great food options can be
found here, always with a street-style twist

LOBBY BAR

Our main bar next to the reception welcomes our guests with a spectacular view

POOL BAR

Enjoy your favourite cocktail and a variety of hot & cold beverages throughout the day

BEACH BAR

For all your refreshment needs during your stay to the beach

COCKTAIL BAR

Signature cocktails in a lounge area, around pool waterfalls







An aerial view of a vibrant water park slide structure. The slide is composed of various colorful sections including green, red, orange, blue, and white. It features several circular loops and a central platform. The slide is set against a large, circular blue pool of water. In the background, there are palm trees and a paved walkway with some people walking. The overall scene is bright and sunny.

THE AQUA SPLASH

For the little thrill-seekers who want to have a blast when on family vacation, our water park offer the wildest and splashiest rides on the island. As safety comes first, the park is certified under strict safety standards.

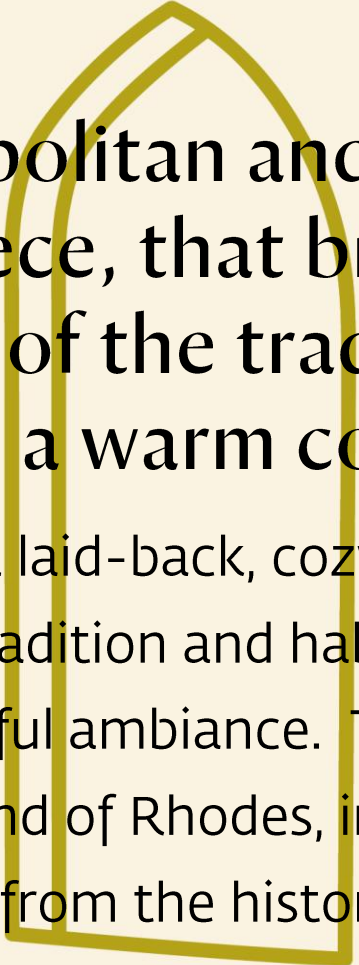
Childlike
happiness
under the
Mediterranean
sun is loading





An aerial view of a modern, multi-level resort complex. The architecture is characterized by light-colored, flat-roofed buildings with arched windows and doorways. The resort is landscaped with numerous palm trees, manicured lawns, and several swimming pools of various shapes and sizes. In the foreground, a large pool is surrounded by lounge chairs and umbrellas. To the right, a sandy beach meets the ocean, with a rocky shoreline. The overall atmosphere is one of sophisticated, laid-back luxury.

Laid-back luxury
for adults

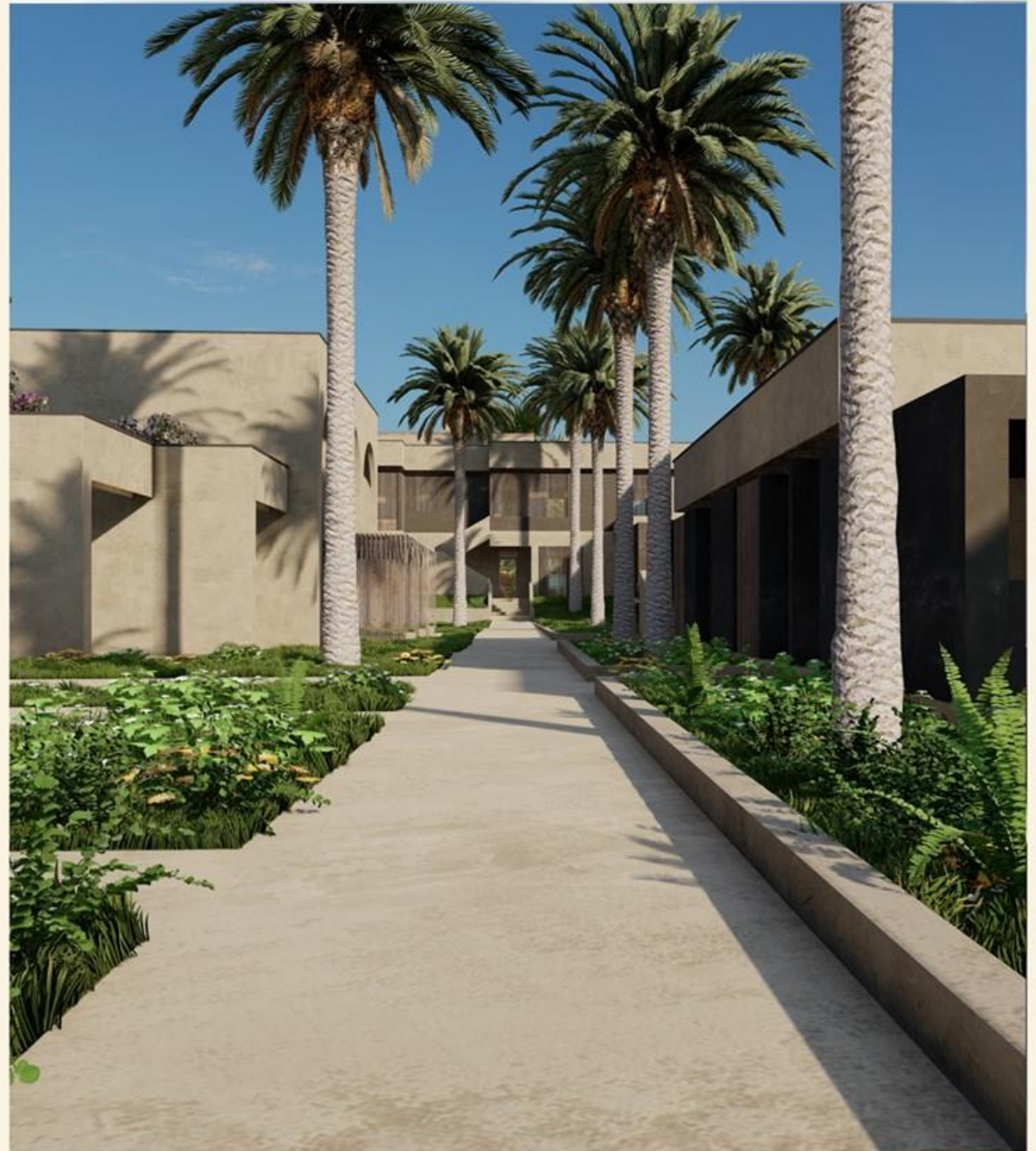


A new cosmopolitan and stylish holiday resort in Greece, that brings together, a combination of the traditional Rhodian architecture with a warm contemporary style.

With the aim to create a laid-back, cozy atmosphere, interiors are inspired from the local tradition and habits. Handcrafted treasures create a fresh and colourful ambiance. The resort is located on the medieval Greek island of Rhodes, in the area of Kalithea, just a few minutes from the historical town of Rhodes.



A blissful retreat with modern and luxurious rooms, a well-varied dining, lively secluded in front of azure waters, make it a summer stand out.



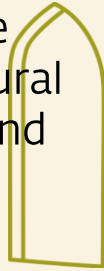


THE ACCOMMODATION

A modern bedroom interior with a large bed, a desk, and a large arched window with a metal grid. The text "THE ACCOMMODATION" is overlaid in the center. The room features a minimalist design with neutral tones, a large bed with a textured headboard, a desk with a mirror, and a large arched window with a metal grid. The lighting is warm and ambient.

ACCOMMODATION

Inspired by the Rhodian culture & way of life, the cozy character comes from natural elements and earthy tones. A personal space in which to kick back and slow down. Elegant spaces with modern furnishing and luxurious touches make Elissa lifestyle resorts the perfect hideaway. The subtle references of a unique location, the natural surroundings, the über-attentive staff and the in-room amenities coordinate a memorable stay.



ROOM TYPES

No. of Rooms

Superior Deluxe	189
Junior Suites	124
Lifestyle Suites	14
Premium Lifestyle Suites	2
Water Bungalows with private pool	3







THE DINING &
LOUNGE AREAS



**EAT
& DRINK**

A five sense dining, showcasing the local bounty of the region, a culinary experience starts at Elissa Lifestyle Resort.

Savor the soulful essence of Rhodian dining with a flavorful journey of authentic Greek mezes, seafood, meats, and vegan delicacies. Flavours of the Mediterranean.



**MAIN
RESTAURANT**

Our main restaurant offering
Greek and Rhodian cuisine

**PAN-ASIAN
RESTAURANT**

Asian influenced
cuisine

**SEAFOOD
RESTAURANT**

Greek Meze style
sea food restaurant

THE GRILL

Greek and Mediterranean
grill flavors

LOBBY BAR

Our main bar next to the reception welcomes our guests with a spectacular view

POOL BAR

Enjoy your favourite cocktail and a variety of hot & cold beverages throughout the day

BEACH BAR

For all your refreshment needs during your stay to the beach

COCKTAIL BAR

Signature cocktails in a lounge area, around pool waterfalls





RHODES



RECREATION & FITNESS



Immerse yourself into a wellness experience, designed to accommodate your needs. A trip to our spa becomes an important part of your journey and helps you reunite with your spirit.

Our mission is to take you to a journey of the senses and help you recharge at a warm beautifully designed space with a stimulating aroma, relaxing sounds, professional therapists and a signature cosmetics line.





SERVICES & FACILITIES

This architectural rendering depicts a modern residential development built on a hillside. The architecture features clean, geometric lines with a mix of materials, including light-colored concrete, dark grey panels, and natural stone. The building is terraced, with multiple levels of balconies and large windows. The foreground is dominated by a series of stone retaining walls that create a stepped landscape. Lush greenery, including trees and various plants, is integrated throughout the design. In the middle ground, there is an outdoor lounge area with wooden tables and chairs, and a person is seen walking. The overall atmosphere is one of a sophisticated and nature-integrated living environment.



THE POOLS

For moments of absolute coolness, enjoy the shimmering waters of our swimming pools.

Swim. Tan. Relax.

An aerial photograph of a beach. The top portion of the image shows a sandy shore with some rocks and debris. The water is a vibrant turquoise color, with darker patches of seabed visible through the shallow water. The overall scene is bright and clear.

THE BEACH

Soak up the glorious Greek sun while you are soothed by the sound of the waves of the Aegean Sea lapping onto a sandy beach beneath your feet.

A person with long hair, seen from behind, stands on a wooden deck. They are looking out at a calm ocean under a clear sky. The deck has a wooden railing and a woven mat on the floor. The scene is lit with warm, golden light, suggesting late afternoon or early morning. The text "OFF PROPERTY EXPERIENCES" is overlaid in white, bold, sans-serif font in the center of the image.

OFF PROPERTY
EXPERIENCES

All off-property experiences maintain the brand look and feel with the aesthetic choices of the resort, following three paths.

Each experience path caters for a different guest interest and diversity for each visit. All paths are connected to the landscape & history of Rhodes.

LEARN. TASTE. ENJOY.



MEETINGS & EVENTS

We bring people together by planning corporate and social events, offering a wide choice of spaces that fit on any occasion.



EVENT HOUSE

TOTAL CAPACITY OVER 500
sqm

Grand Ballroom / 260 sqm.

Boardroom / 1 & 2 - 70 sqm. & 70 sqm.

Theatre Boardroom / 3 & 4 - 70 sqm & 70
sqm.

Meeting Room 1 / 50 sqm.

Meeting Room 2 / 50 sqm.

Meeting Room 3 / 50 sqm.

Meeting Room 4 / 50 sqm.

Meeting Room 5 / 35 sqm.

Meeting Room 6 / 35 sqm.



CONTACT

Passari Rania
Human Resources Director
+30 210 6842801

rpassari@ellaresorts.com
EllaResorts.com

ENGAGE

[INSTAGRAM](#)
[FACEBOOK](#)

